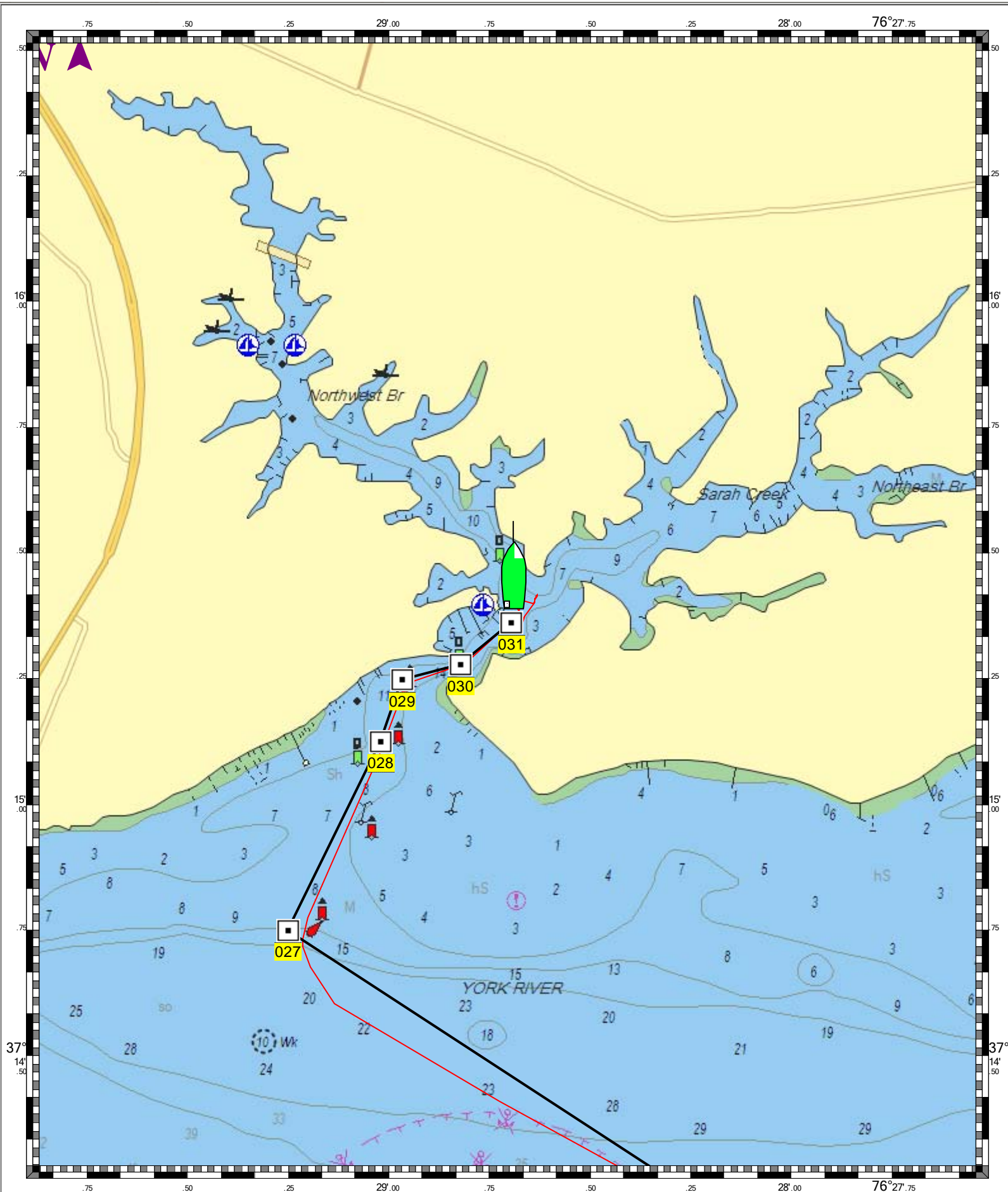
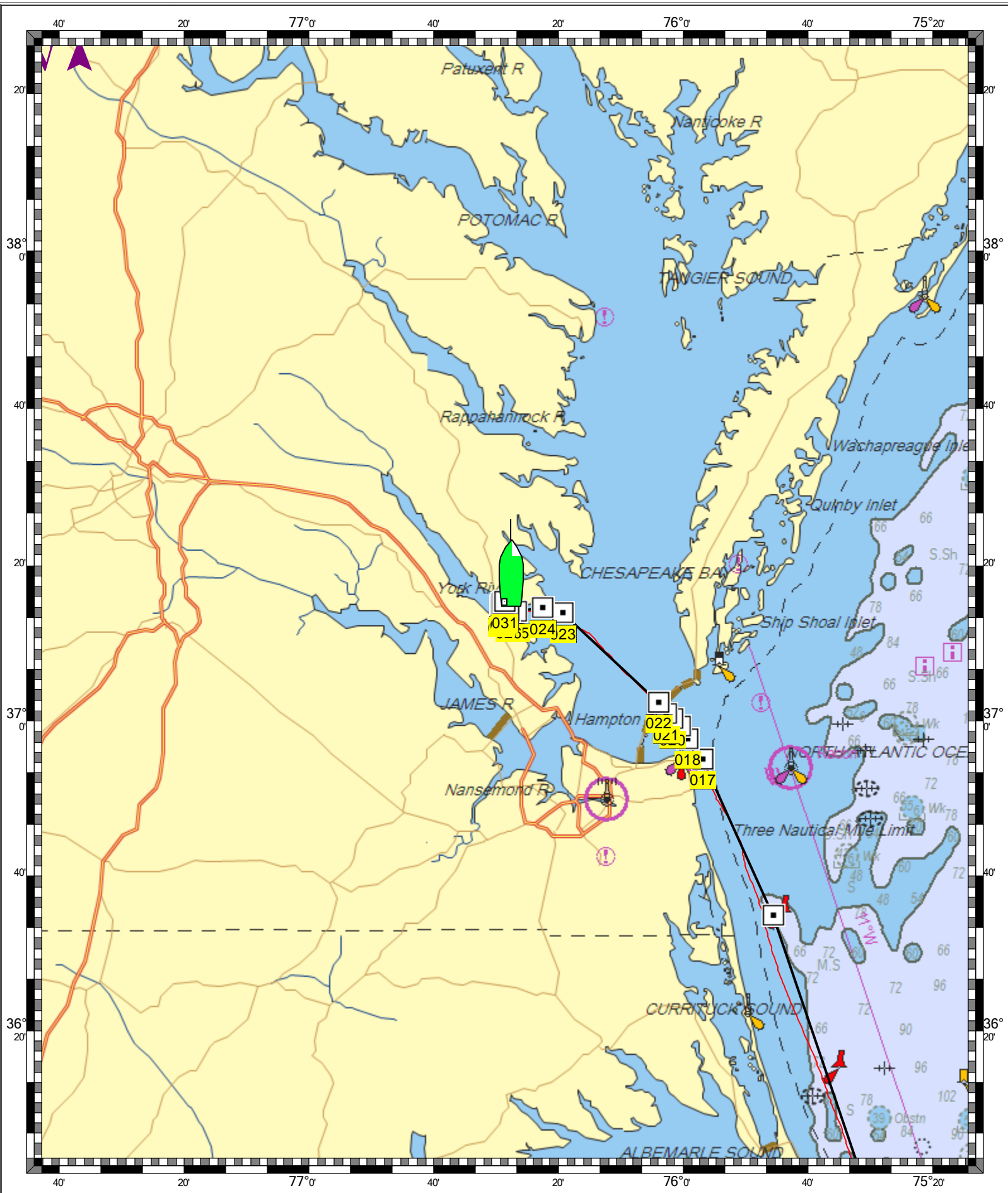


**CHESAPEAKE BAY MOBJACK BAY AND YORK RIVER ENTRANCE - 1 : 17,600**  
**(MAX Pro World Charts - vector format) Chart #12238 - Depth Units: Feet**



**DO NOT USE FOR NAVIGATION**  
**SOME NAVIGATION AIDS MAY NOT BE SHOWN**

**CAPE SABLE TO CAPE HATTERAS - 1 : 1,129,000**  
**(MAX Pro World Charts - vector format) Chart #13003 - Depth Units: Feet**



DO NOT USE FOR NAVIGATION  
SOME NAVIGATION AIDS MAY NOT BE SHOWN