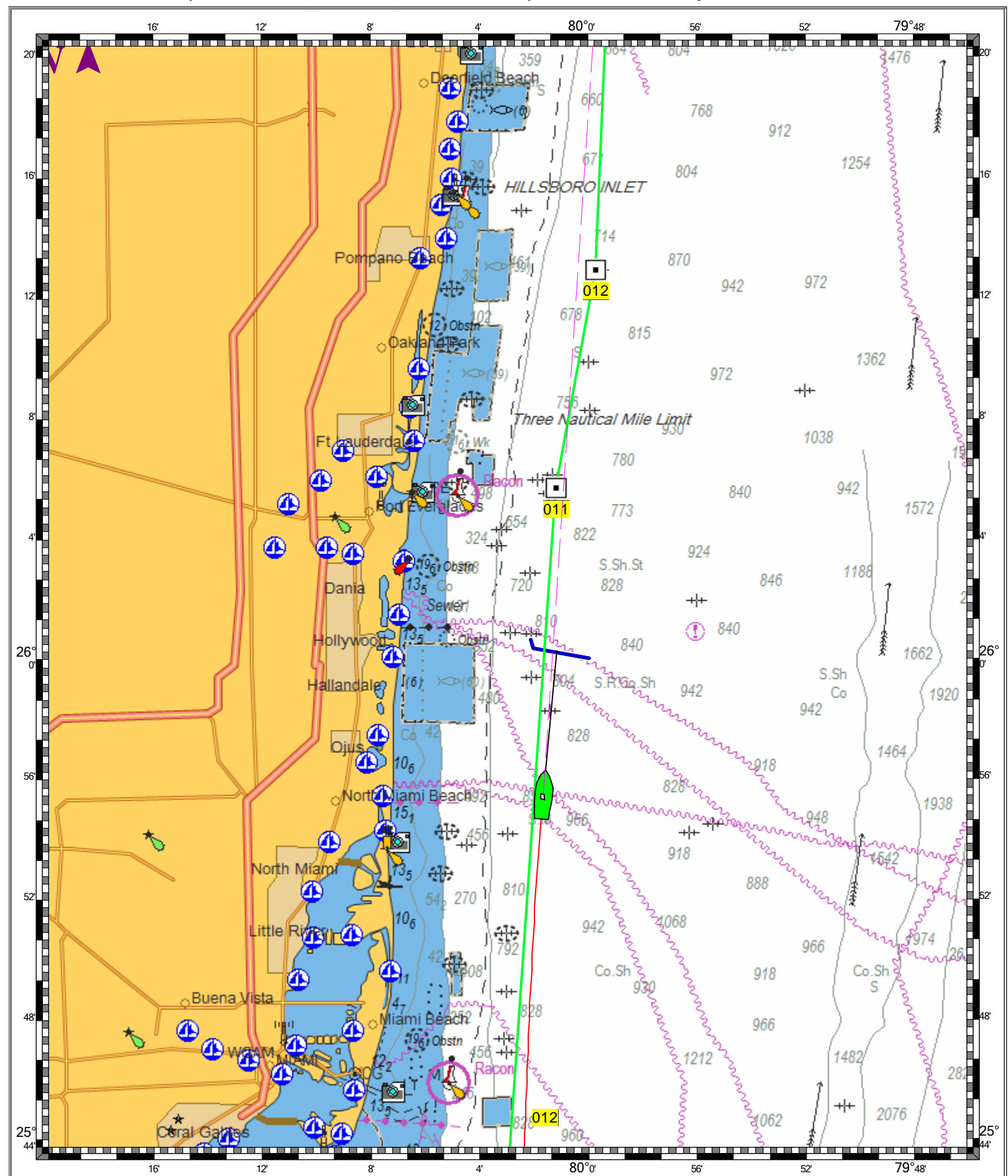
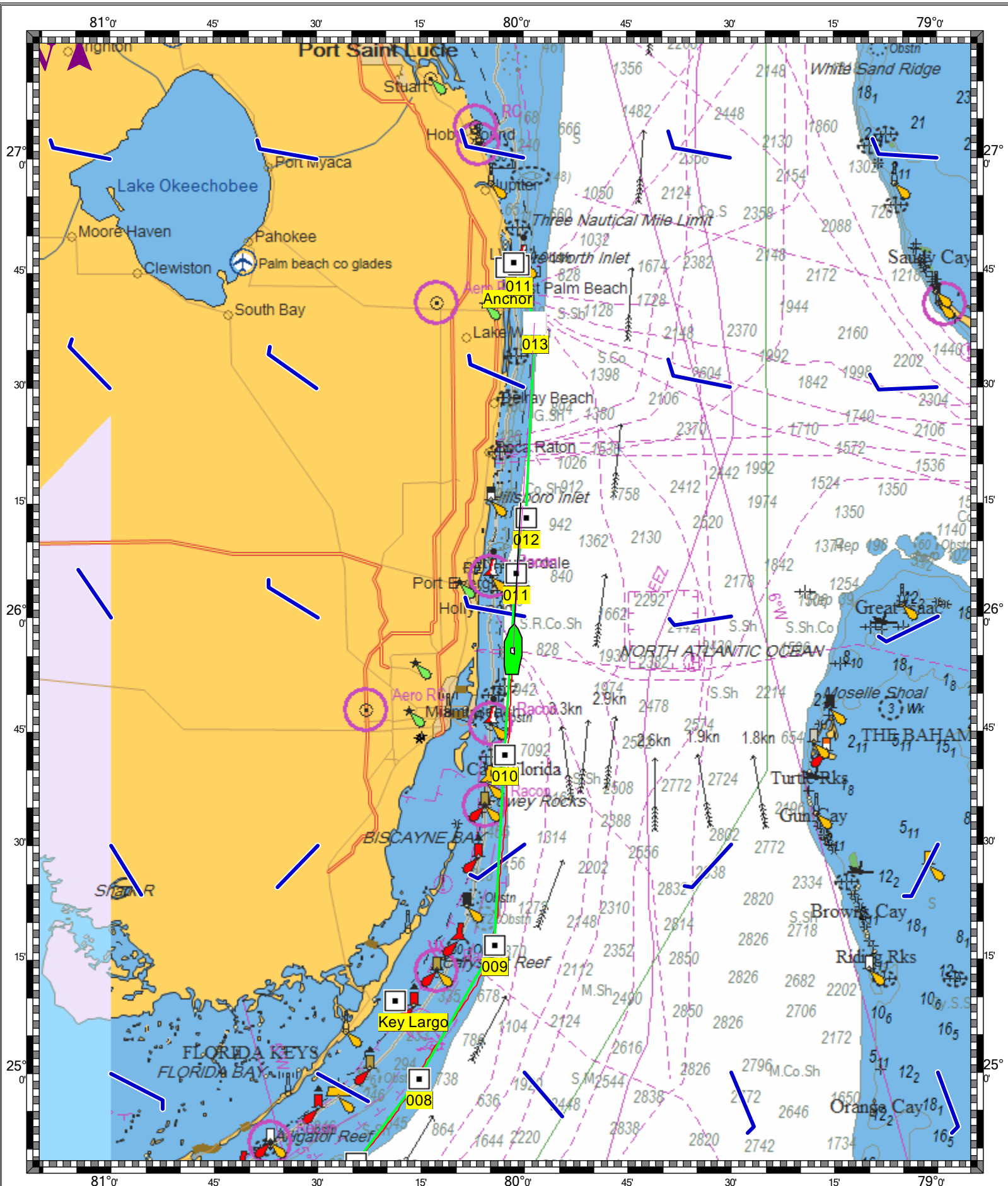


CAPE CANAVERAL TO KEY WEST - 1 : 288,000
(MAX Pro World Charts - vector format) Chart #11460 - Depth Units: Feet



DO NOT USE FOR NAVIGATION
SOME NAVIGATION AIDS MAY NOT BE SHOWN

STRAITS OF FLORIDA AND APPROACHES - 1 : 1,153,000
(MAX Pro World Charts - vector format) Chart #11013 - Depth Units: Feet



DO NOT USE FOR NAVIGATION
SOME NAVIGATION AIDS MAY NOT BE SHOWN