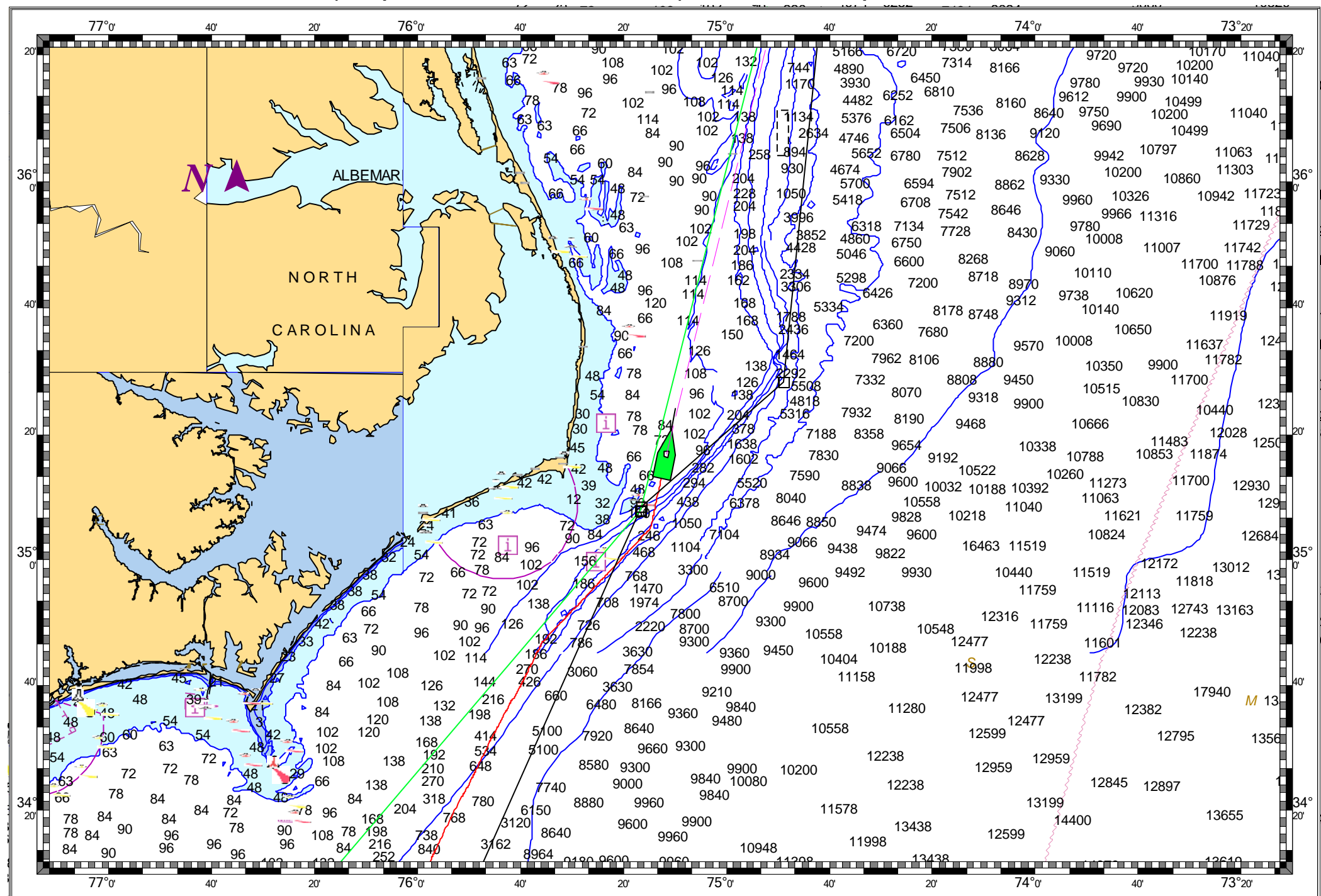


UNITED STATES - EAST COAST. CAPE HATTERAS TO STRAITS OF FLORIDA. - 1 : 4,530,000
(Passport World Charts - vector format) Chart #U11009 - Depth Units: Feet



DO NOT USE FOR NAVIGATION
SOME NAVIGATION AIDS MAY NOT BE SHOWN