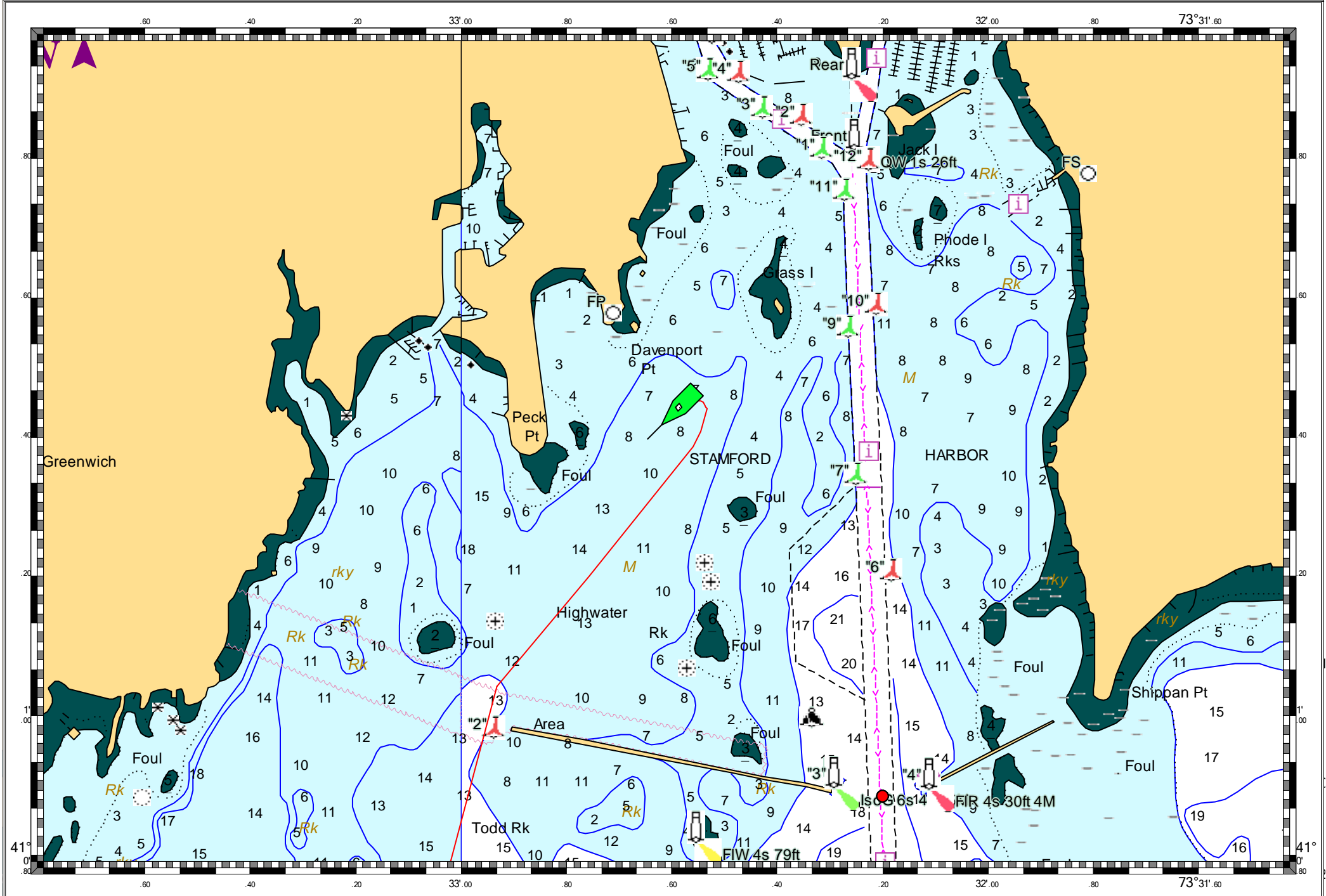


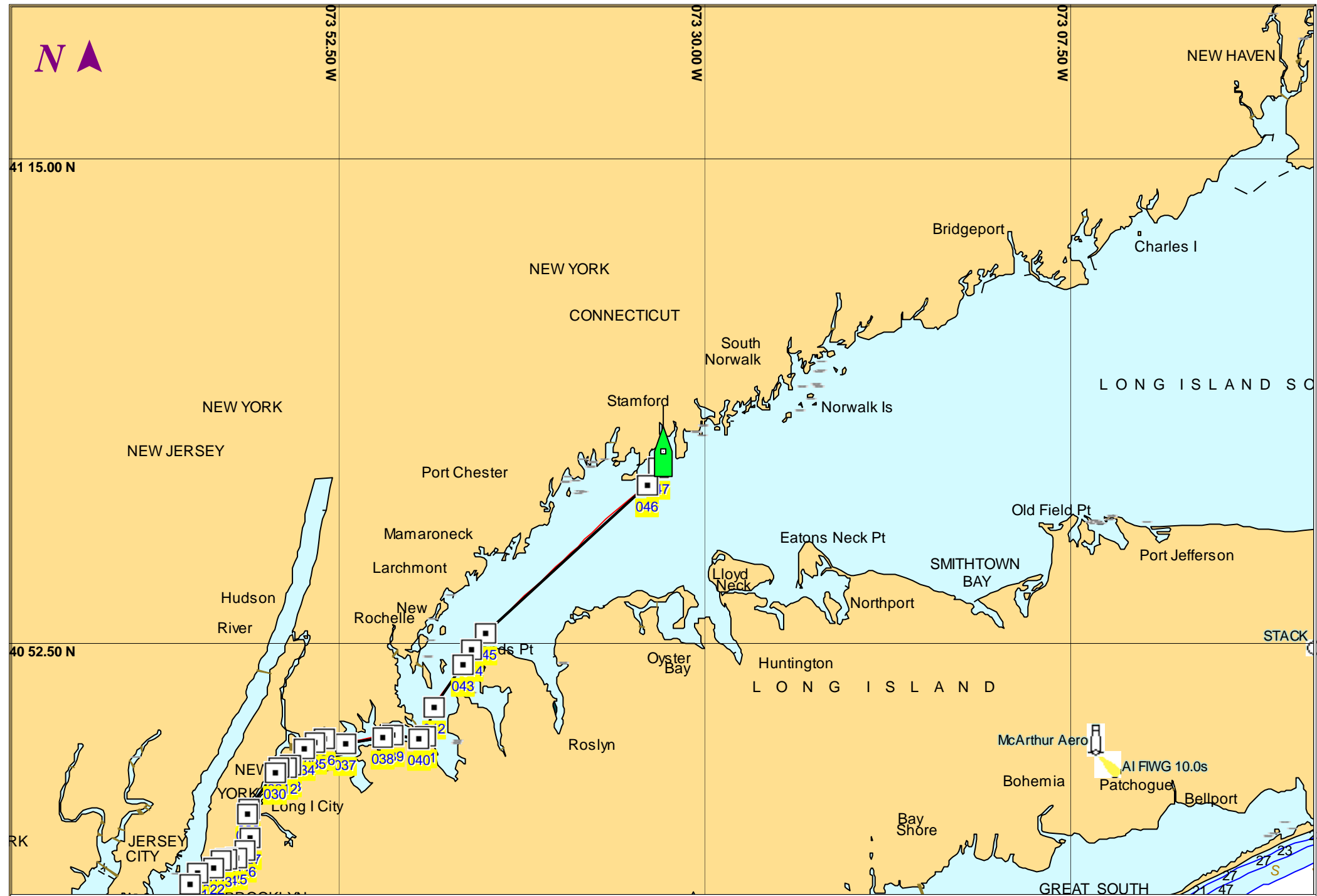
U.S.-EAST COAST.CONNNECTICUT-NEW YORK. LONG ISLAND SOUND. WESTERN PART. - 1 : 44,600
(Passport World Charts - vector format) Chart #U12363 - Depth Units: Feet



DO NOT USE FOR NAVIGATION
SOME NAVIGATION AIDS MAY NOT BE SHOWN

U.S. APPROACHES TO NEW YORK. NANTUCKET SHOALS TO FIVE FATHOM BANK. - 1 : 1,430,000

(Passport World Charts - vector format) Chart #U12300 - Depth Units: Feet



41 15.00 N

073 52.50 W

073 30.00 W

073 07.50 W

40 52.50 N

STACK

ARK

DO NOT USE FOR NAVIGATION
SOME NAVIGATION AIDS MAY NOT BE SHOWN