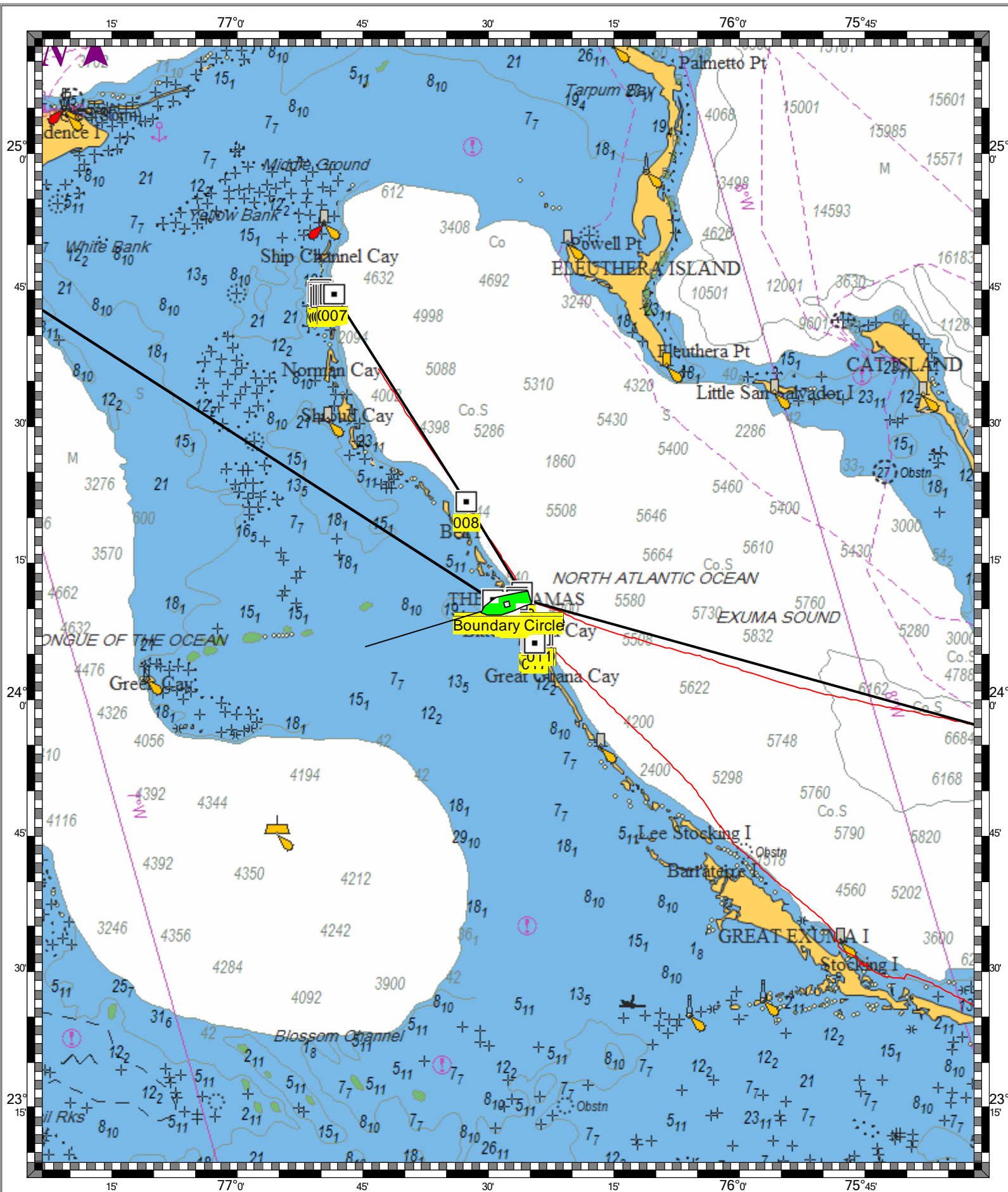
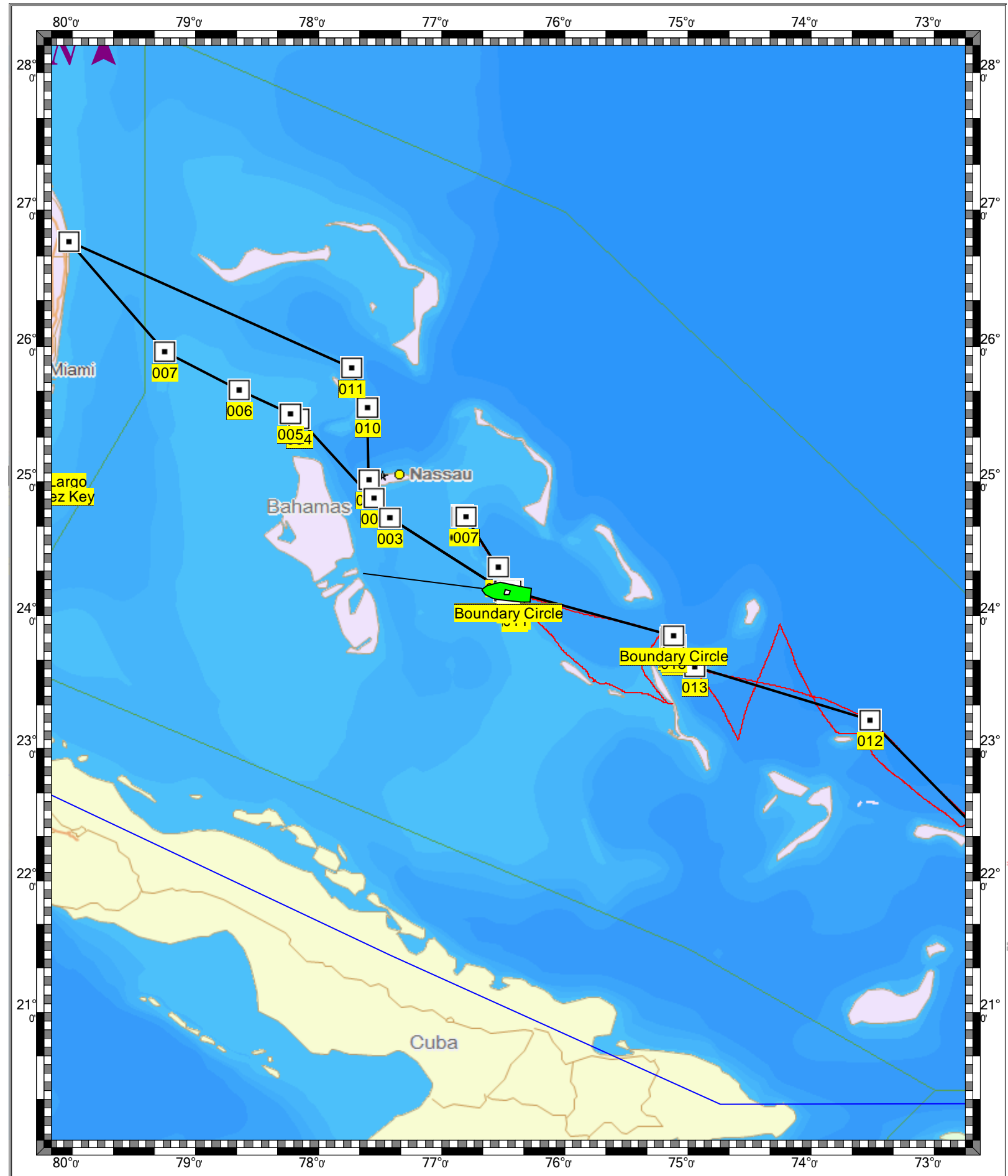


STRAITS OF FLORIDA AND APPROACHES - 1 : 970,000
(MAX Pro World Charts - vector format) Chart #11013 - Depth Units: Feet



MAX Pro World Chart - 1 : 3,880,000
(MAX Pro World Charts - vector format) Chart #MAX Pro - Depth Units: Feet



DO NOT USE FOR NAVIGATION
SOME NAVIGATION AIDS MAY NOT BE SHOWN