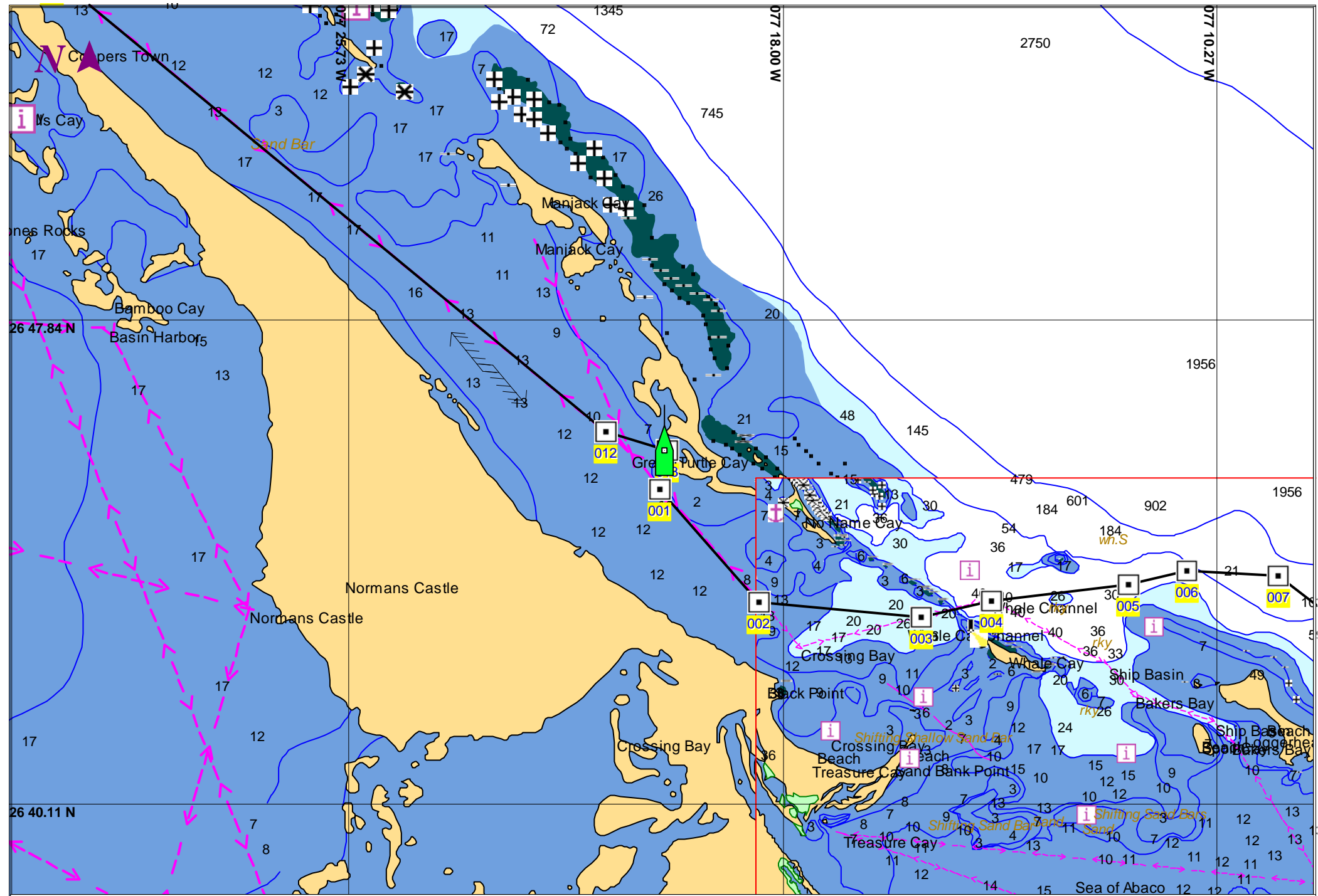
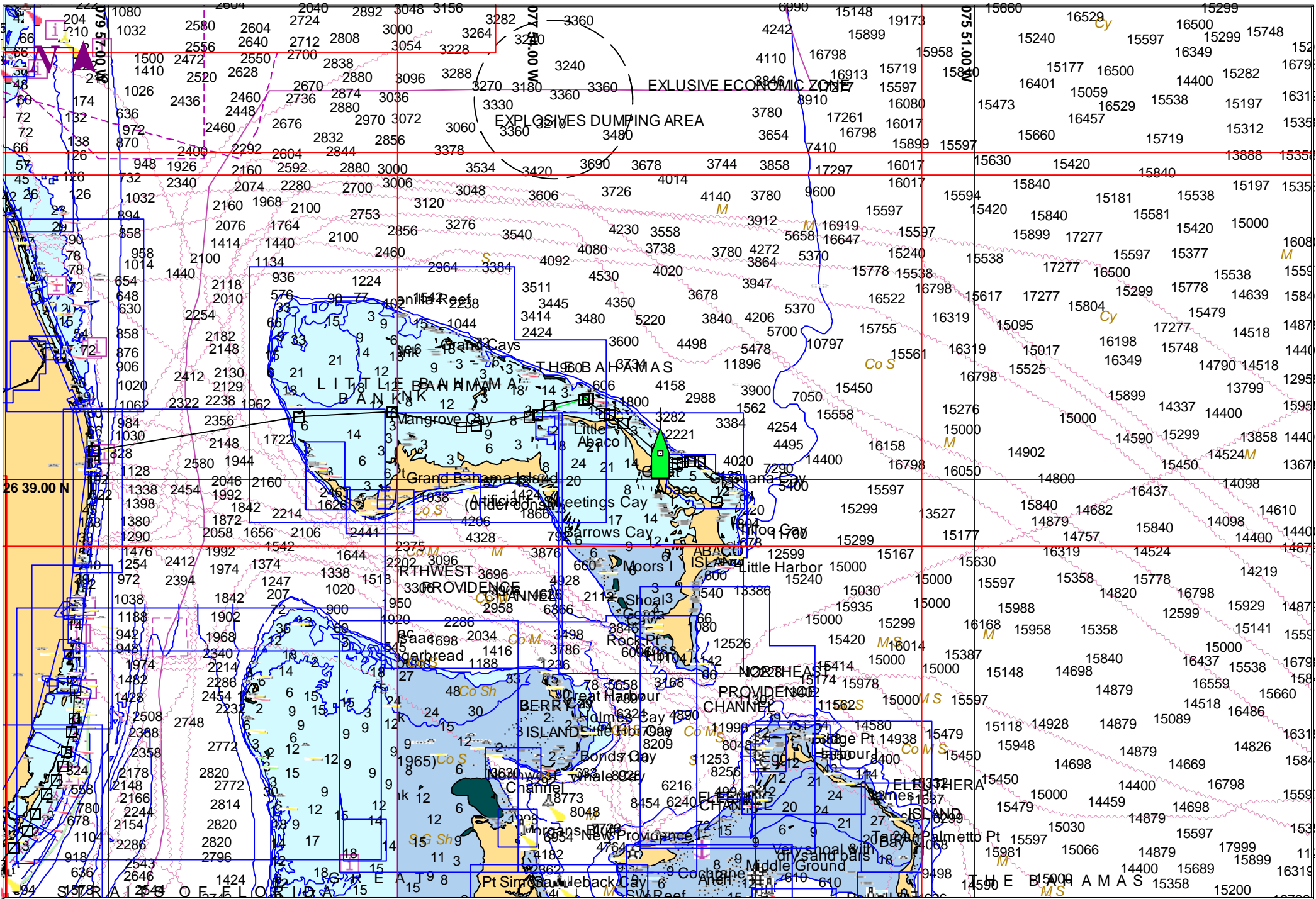


UNITED STATES - EAST COAST. CAPE HATTERAS TO STRAITS OF FLORIDA. - 1 : 414,000
(Passport World Charts - vector format) Chart #U11009 - Depth Units: Feet



DO NOT USE FOR NAVIGATION
SOME NAVIGATION AIDS MAY NOT BE SHOWN

NORTH ATLANTIC OCEAN-CARRIBEAN SEA.WEST INDIES. KEY WEST TO SAN JUAN. - 1 : 6,630,000
(Passport World Charts - vector format) Chart #U27005 - Depth Units: Feet



DO NOT USE FOR NAVIGATION
SOME NAVIGATION AIDS MAY NOT BE SHOWN