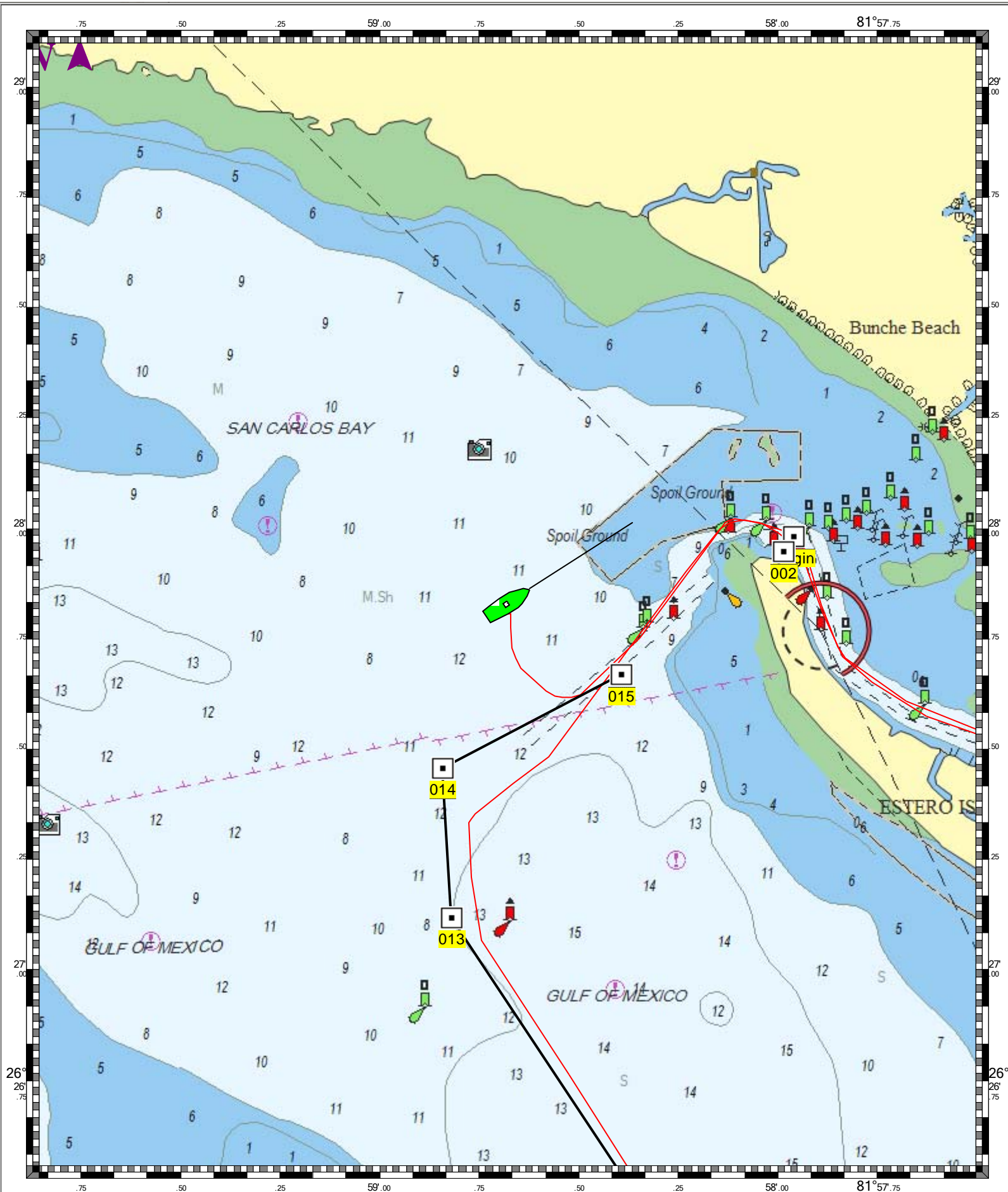
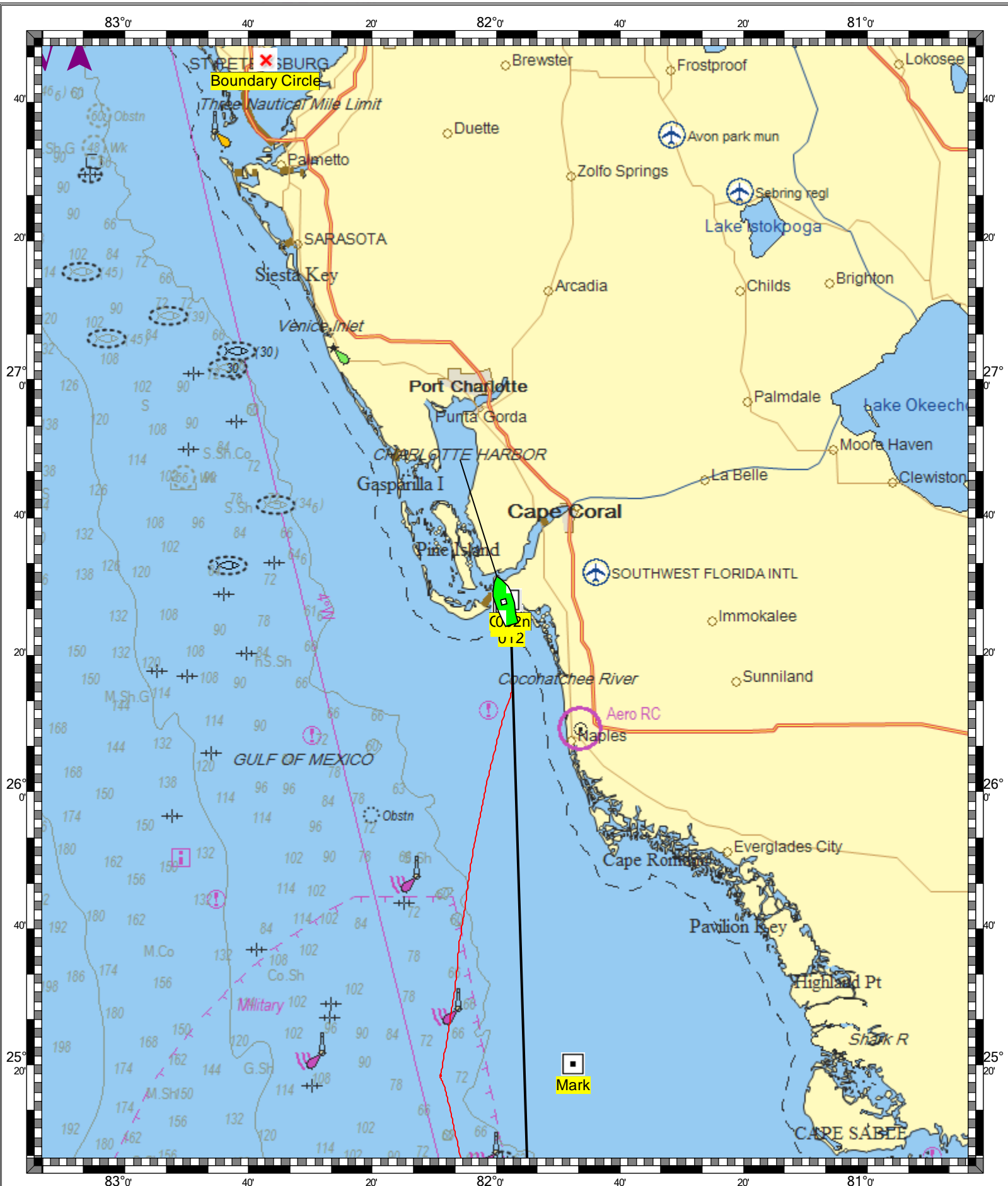


FORT MYERS TO CHARLOTTE HARBOR & WIGGINS PASS - 1 : 20,000
(MAX Pro World Charts - vector format) Chart #11427C - Depth Units: Feet



KEY WEST TO THE MISSISSIPPI RIVER - 1 : 1,280,000
(MAX Pro World Charts - vector format) Chart #11006 - Depth Units: Feet



DO NOT USE FOR NAVIGATION
SOME NAVIGATION AIDS MAY NOT BE SHOWN