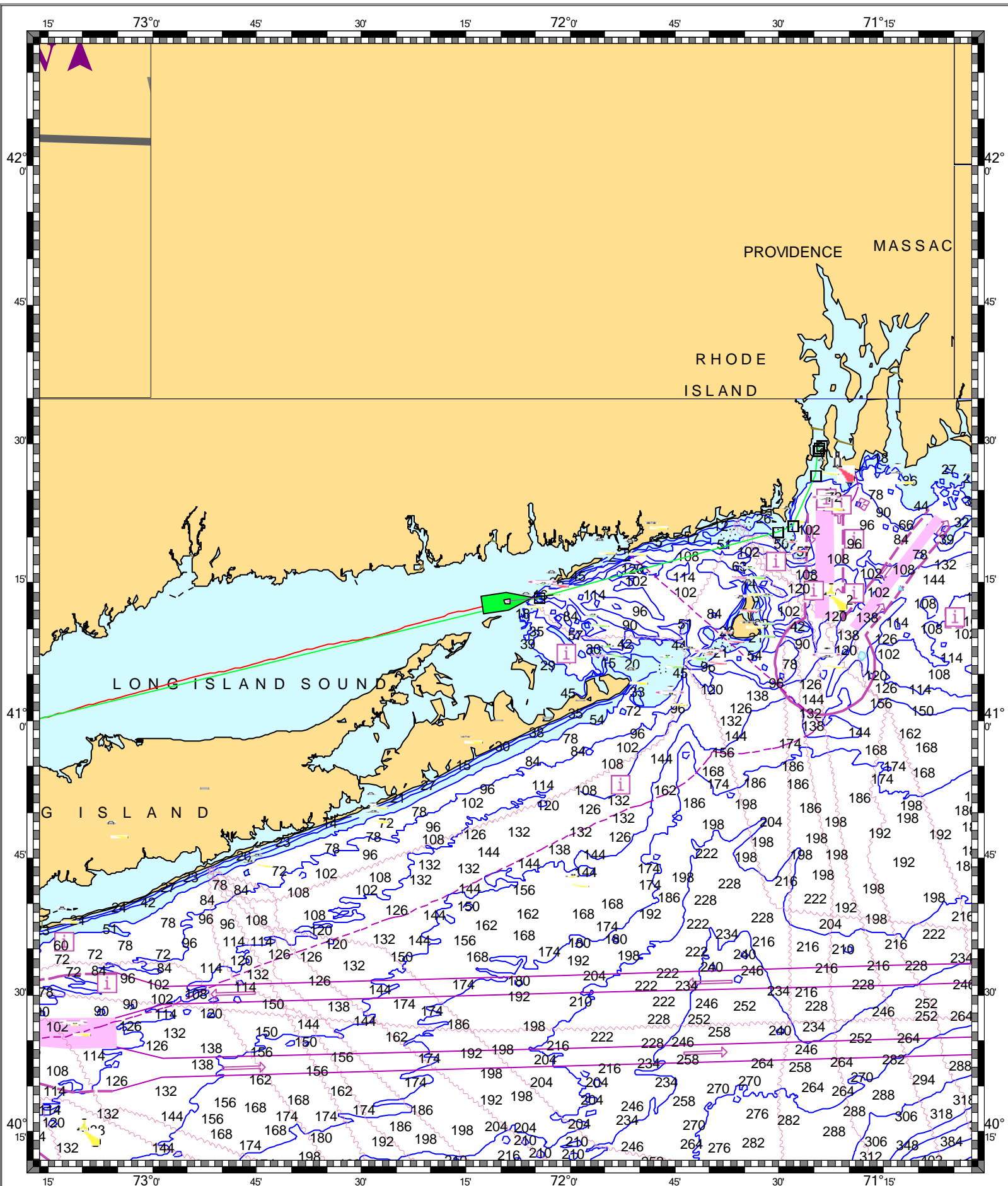
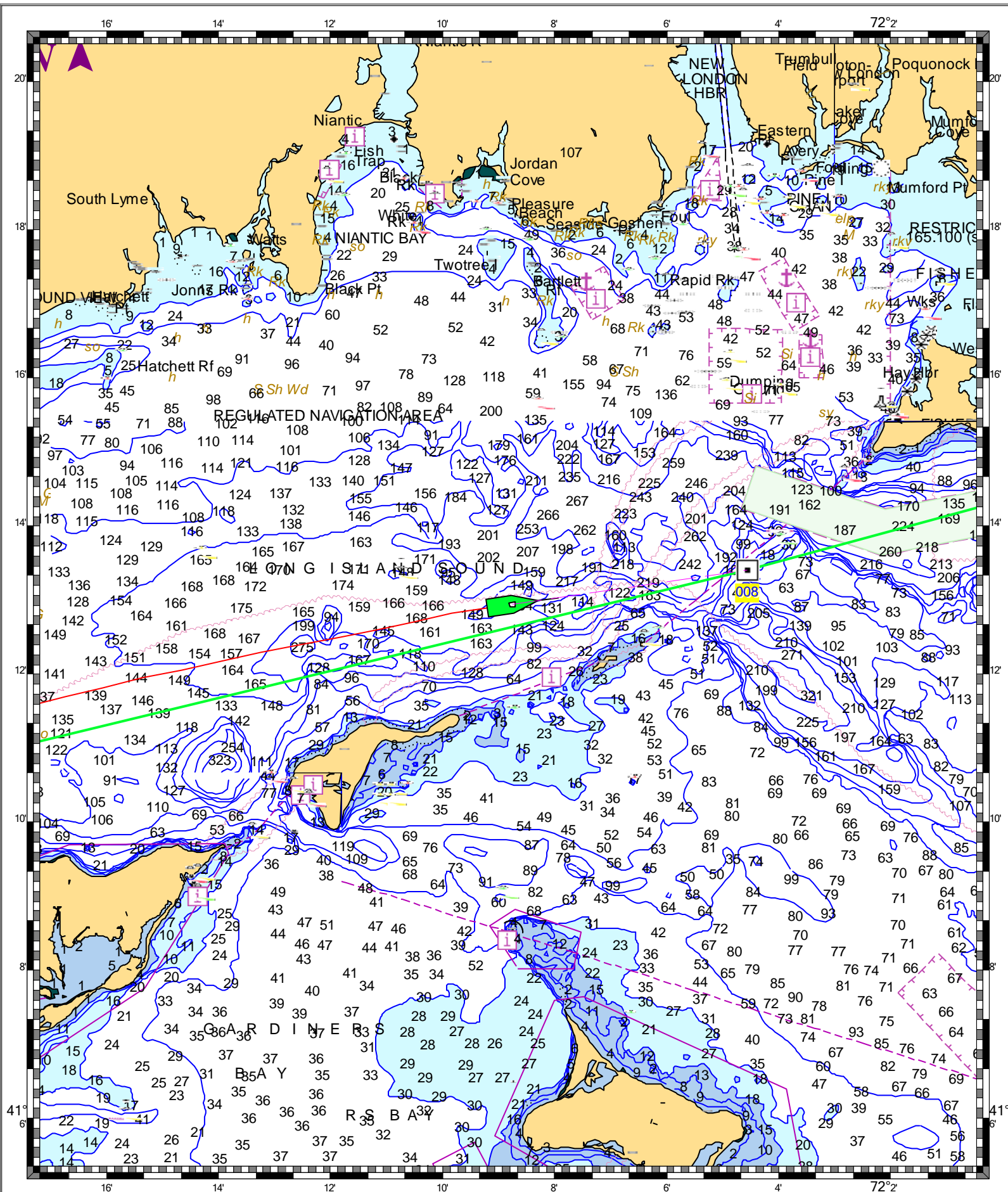


UNITED STATES - EAST COAST. GEORGES BANK AND NANTUCKET SHOALS. - 1 : 3,360,000
(Passport World Charts - vector format) Chart #U13200 - Depth Units: Feet



DO NOT USE FOR NAVIGATION
SOME NAVIGATION AIDS MAY NOT BE SHOWN

ATLANTIC COAST. CAPE SABLE TO CAPE HATTERAS. - 1 : 420,000
(Passport World Charts - vector format) Chart #U13003 - Depth Units: Feet



DO NOT USE FOR NAVIGATION
SOME NAVIGATION AIDS MAY NOT BE SHOWN